

# WoF news

VEHICLE CERTIFICATION UNIT

April 2005 Issue 6

## SAY HELLO TO Land Transport New Zealand

In our last issue, we advised that the Land Transport Safety Authority (LTSA) was going to disappear. Following the re-structuring of the land transport sector, the LTSA has been replaced by Land Transport New Zealand (Land Transport NZ). You will not notice much change, if any, in the near future in how we continue to do business with you. The indications are that the Vehicle Certification Unit will remain with the same staff as before, doing the same job. References to the LTSA will remain on existing documents and will gradually be replaced.

## VIRM amendments

On 27 February 2005, the Vehicle Lighting and Vehicle Equipment Rules came in to force. You should receive the VIRM amendment (Version 2, Amendment 2) at the beginning of April. If you haven't received your amendment package by 22 April 2005, contact Jackie Hartley on (04) 910 8166. Please don't file the amendment with the rest of the mail piled on your desk, insert it in your VIRM straight away.

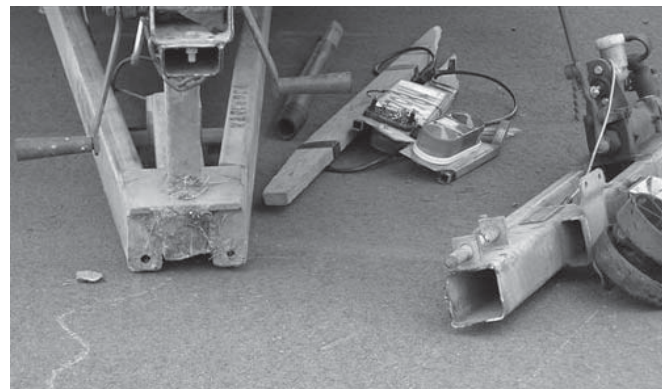
The amendment will be effective as of 1 May 2005. You should continue to inspect to the current VIRM (Version 2, Amendment 1) until 30 April 2005.

## Get your lights right

The booklet *Get your lights right!* will be included with your VIRM amendment. It provides general lighting advice, but also gives particular attention to after-market lights, some of which are not part of WoF inspections. You may find it useful to hand out to some of your customers. In the meantime, the booklet can also be viewed on the Land Transport NZ website [www.landtransport.govt.nz/vehicle-safety/get-your-lights-right.html](http://www.landtransport.govt.nz/vehicle-safety/get-your-lights-right.html)

## Windows 3.11 on its last legs

As of December 2005, **WoF Online will not work with Windows 3.11**. It is also likely that Windows 95 won't work for much longer. We recommend that you upgrade as soon as possible if you are running Windows 95 or older.



A classic case of fatigue caused by welding the neck of the drawbar.

## Cracker of a drawbar

The above trailer was recently issued a WoF. Please remember to look for cracking and fatigue on drawbars.

## VIRM improvement suggestion form

We will soon be starting work on the next amendment that will address other VIRM issues, corrections, etc. This work will also include putting the forklift and tractor sections into the correct VIRM format.

If you want to help improve the VIRM, give us your suggestions on the improvement suggestion form (the last page in the VIRM Introduction section).



Land Transport NZ  
Ikiiki Whenua Aotearoa

WoF checksheets

With the changes in the VIRM, it will be necessary to change the checksheet at some stage. The new WoF checksheet specifications are available at [www.landtransport.govt.nz](http://www.landtransport.govt.nz). Wickliffe will have new Land Transport NZ checksheets available from early May 2005. If you produce your own checksheets, then you should update them as soon as possible after May. In any case, you may continue to use up your old stock, but be aware of the change in lighting terminology, and that some items will no longer apply.

Speed category symbols

Some of you do not have ready access to a key to the tyre speed category symbols, so here it is. It will be included in the VIRM in the next update.

| Speed symbol – speed category (km/h) |         |         |               |
|--------------------------------------|---------|---------|---------------|
| A1 – 5                               | B – 50  | L – 120 | U – 200       |
| A2 – 10                              | C – 60  | M – 130 | H – 210       |
| A3 – 15                              | D – 65  | N – 140 | V – 240       |
| A4 – 20                              | E – 70  | P – 150 | W – 270       |
| A5 – 25                              | F – 80  | Q – 160 | Y – 300       |
| A6 – 30                              | G – 90  | R – 170 | ZR – over 240 |
| A7 – 35                              | J – 100 | S – 180 |               |
| A8 – 40                              | K – 110 | T – 190 |               |

Infosheets

On 27 February 2005, two WoF-related infosheets were withdrawn:

- 1.01 *Light trailer towing requirements*
- 2.04 *Assessing noise levels of modified exhaust systems.*

2.03 *Lighting endorsement on Vintage Car Club Vehicle Identity Cards* has been amended so it provides information for the public. Vehicle inspectors are no longer required to have this infosheet, although some of you may still find the information useful.

This means that WoF inspectors are now required to have access only to the following infosheets:

- 1.35 *Nissan Terrano and Mistral corrosion*
- 1.86 *Additional child seats*
- 2.02 *Webbing grabber seatbelts*
- 2.05 *Spring loaded ball joints*
- 2.07 *Citroen Xantia and XM*

Wof online help

- XTRA** – phone 0800 000 533  
(for problems with accessing WoF online)
- TRC** – phone 0800 804 580 / fax 06 354 6931  
(for problems after you’ve accessed WoF online)
- UNISYS** – phone 0800 243 687  
(for problems with user access codes and passwords)
- TRC** – phone 0800 108 809  
(for phone inquiries from members of the public)
- VCU** – phone 0800 587 287  
(for technical assistance and reporting staff movements)

feedback...?

- We welcome your feedback.  
Please send any comments to:
- Peter Russell  
Vehicle Certification Unit  
Land Transport New Zealand  
PO Box 2840, Wellington  
Email: [peter.russell@landtransport.govt.nz](mailto:peter.russell@landtransport.govt.nz)