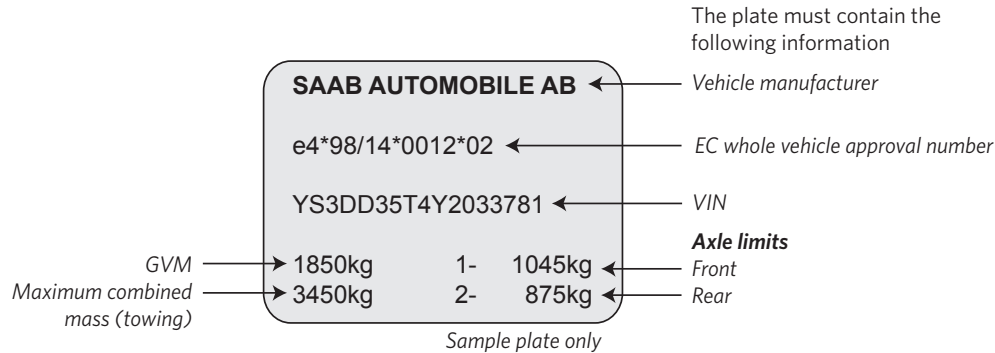


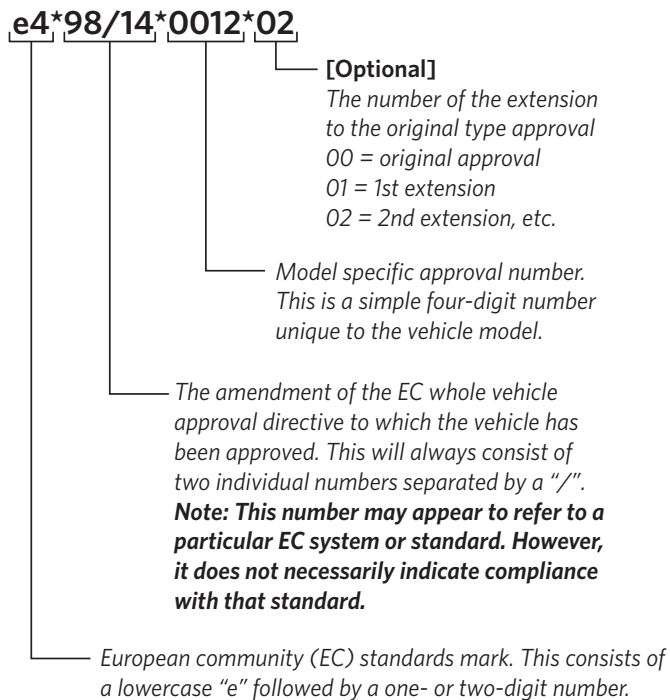
Reference material 29: Sample European Community (EC) whole vehicle approval plates

Excluding motorcycles

Identifying the EC whole vehicle approval plate - except motorcycles and mopeds



The EC whole vehicle approval number



Note 1 Any directive number in the whole vehicle approval number is acceptable to prove compliance with all standards requirements with the exception of frontal impact and emissions.

Note 2 If the number is Framework directive 2001/116 or one of its higher amendments, it will prove compliance with all required standards and also frontal impact and emissions to Euro 3. If the number is framework directive 2007/46, or 2018/858/EC or one of its higher amendments, it will prove compliance with all required standards and also frontal impact and emissions to Euro 4. The current higher amendment numbers are:

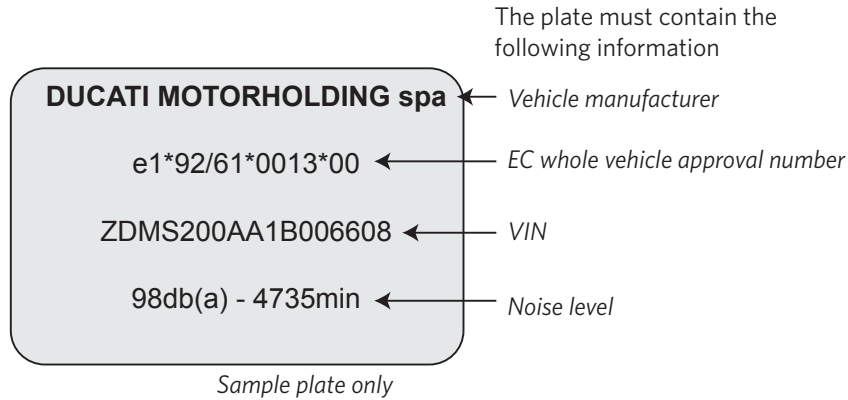
2007/37	2007/46	285/2009	595/2009corr	2010/19
1060/2008	385/2009	595/2009	661/2009	371/2010
2018/858				

Note 3 The following directive numbers are **not** acceptable to prove compliance with all standards. An [exemption to land transport rules](#) is required, which will require evidence such as a European certificate of conformity (CoC) and test reports to demonstrate that requirements have been substantially complied with and that further compliance is unnecessary.

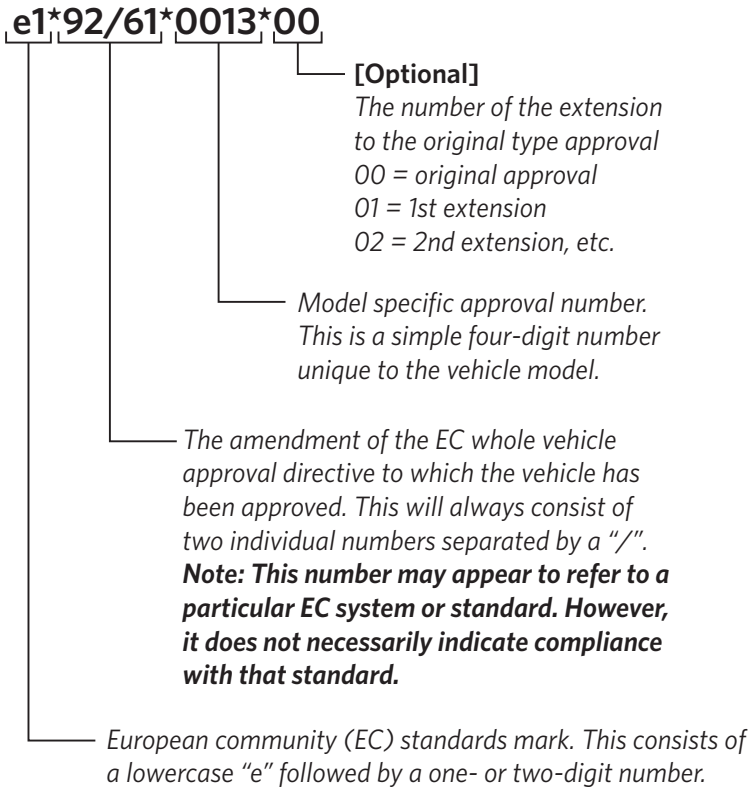
KS/46 KS07/46

Motorcycles and mopeds

Identifying the EC whole vehicle approval plate - motorcycles and mopeds



The EC whole vehicle approval number



Note: Listed below are examples of the acceptable 'base directive/regulation numbers' shown in the EC whole vehicle approval number which are acceptable to prove compliance with all standards, including braking standards:

92/61

2002/24

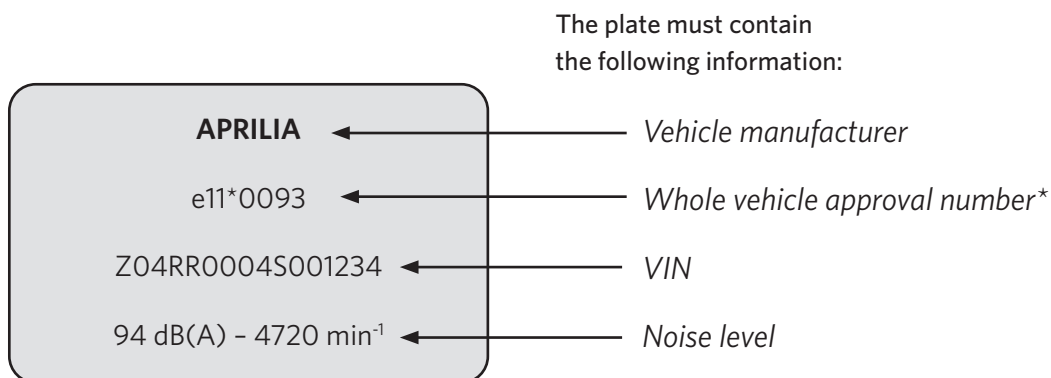
2009/67

168/2013

Motorcycles

EC whole vehicle approval plate – alternative format for motorcycles

EC whole vehicle approval plates in the following format may be accepted for motorcycles as an alternative to the format specified in Reference material 29 page 29-2.



- * The whole vehicle approval number may be in short form containing only the following information:

