

Reference material 28

Sample United Nations Economic Commission for Europe (UN/ECE) compliance plates

Excluding motorcycles

Identifying the UN/ECE compliance plate - except motorcycles

The plate must contain the following information:

DATE OF MFR. (BUILT)		6-97		MDH: 061907	
VIN: 1C4GHB4RBVU149464 ← VIN					
E <sub>4</sub>	21	0195002	E <sub>11</sub>	13	063098
	26	0195001		14	030169
E <sub>6</sub>	10	010035	E <sub>13</sub>	17	040212
	11	020011		39	00155
	18	010010		44	0244038
	46	010019		51	011082
	85	000044		64	000029
E <sub>11</sub>	28	010016	E <sub>13</sub>	79	00155
	12	030263		48	015003

Table in this format listing the UN/ECE regulations that the vehicle has been certified to, the approval numbers relating to these certifications, and the UN/ECE standards marks

Sample plate only

Explanation of table

E <sub>11</sub>	21	0195002
	26	0195001

Approval number. This number relates to the certification of the component or system to the UN/ECE regulation listed to the right.

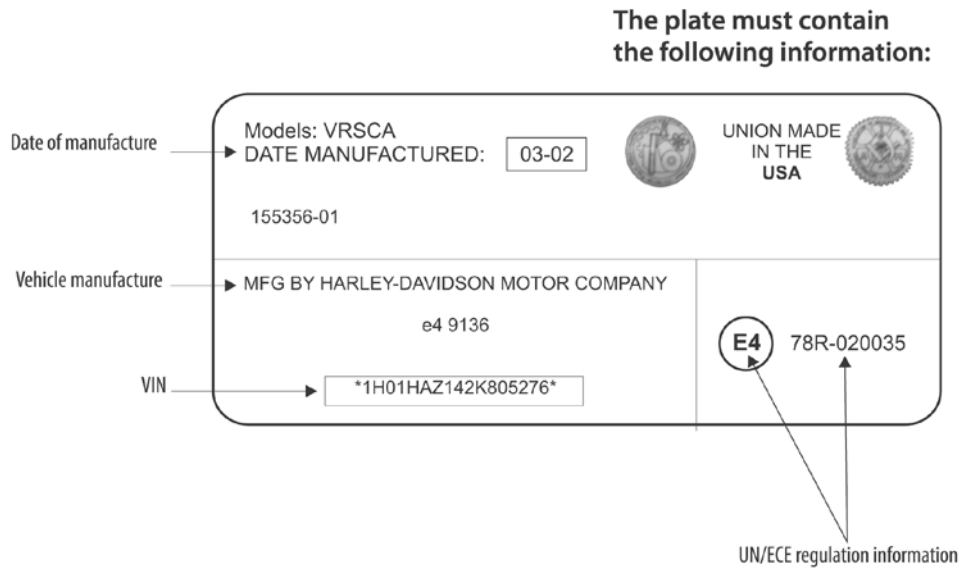
The number of the UN/ECE regulation to which the vehicle has been certified (eg, 13 means that the vehicle has been certified to UN/ECE regulation 13).

United Nations Economic Commission for Europe (UN/ECE) standards mark. This consists of an upper case E followed by a one or two digit number.

# Reference material 28 Sample United Nations Economic Commission for Europe (UN/ECE) compliance plates (cont.)

## Motorcycles

### Identifying the UN/ECE compliance plate - motorcycles



### UN/ECE regulation information

**E4 78R - 020035**

