

1 OCTOBER 2020 VIRM AMENDMENT

ABS testing requirements clarification

Heavy vehicles

Following further feedback, Figure 8-1-5 and Note 11 have been added to assist vehicle inspectors.

35. An ABS plug or socket (see **Figure 8-1-5**)

a) is missing, or

b) has damaged, displaced or corroded pins, or

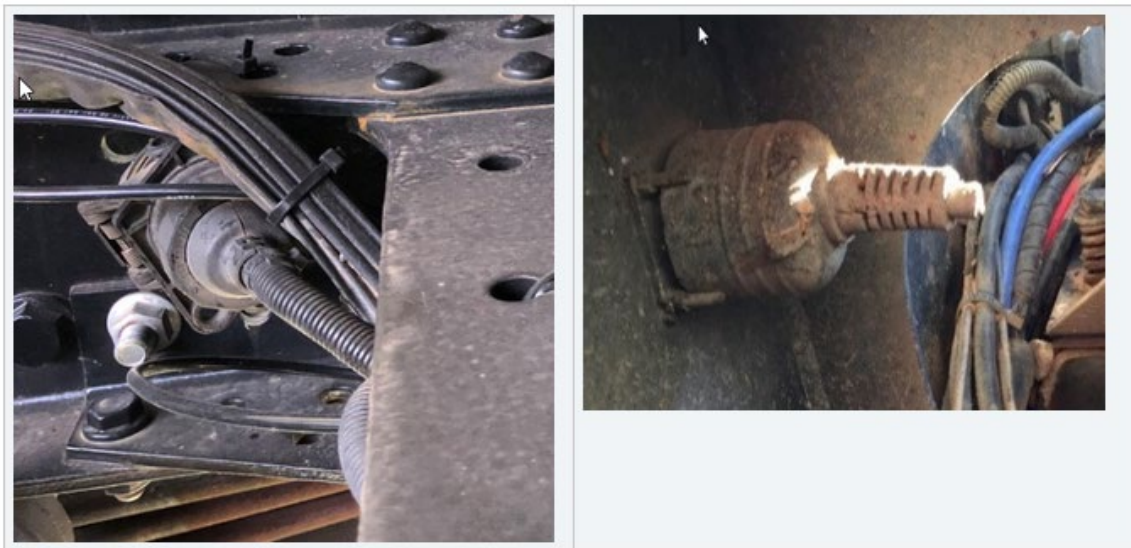
c) is otherwise broken or defective.

- Dismantling of the plug or socket is not required, visual inspection only.

40. An ABS system is inoperative (**Note 11**).

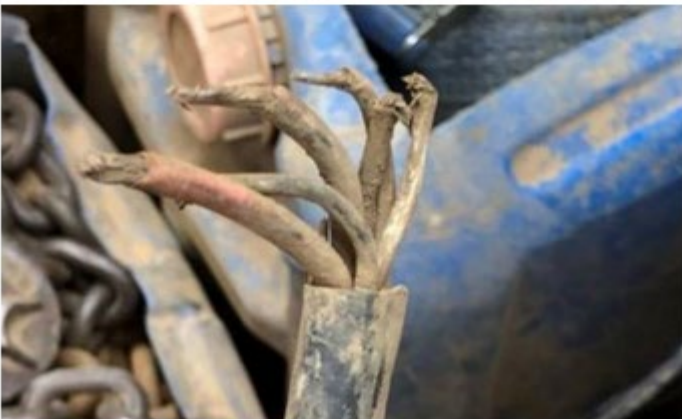
Note 11

The ABS system must be cycled, this can be done by shutting down the vehicle engine and returning the ignition to 'on' only, observe ABS warning light operation and listen for a clicking or chuffing sound from the modulator or valve unit.



Check wheel sensors and pulse rings (if visible) and for trapped wiring or damaged air lines.

Figure 8-1-5. ABS visual inspection guide



Heavy trailers

Following further feedback, the requirement to test the ABS function of a heavy trailer will be introduced with the April 2021 VIRM amendment. The ABS function of a heavy trailer will require a means of powering up the system, this may be done using an attached truck/tractor unit or a voltage suitable external power supply.

Further consultation will take place prior to the introduction of the VIRM amendment.

Figure 5-1-2 and Note 5 have also been added to assist vehicle inspectors.

31. An ABS plug or socket (see **Figure 5-1-2**) (**Note 5**)

a) is missing, or

b) has damaged, displaced or corroded pins, or

c) is otherwise broken or defective.

Note 5

Check wheel sensors and pulse rings (if visible) and for hidden plugs or trapped and damaged wiring,

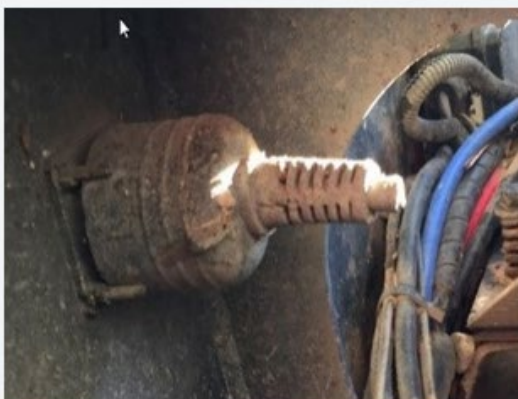


Figure 5-1-2. ABS visual inspection guide

